



BLOOMSBURY
FESTIVAL



11-20 OCTOBER 2019



Small Steps and Giant Leaps

A world-class festival from a local community

Small Steps and Giant Leaps!

On 20 July 1969 a lone figure made a muffled pronouncement "One small step for man, one giant leap for mankind", but behind the lunar landing were more than 400,000 NASA engineers and scientists. Whilst the Kennedy Space Center is a long way from Bloomsbury, this concept feels very close to home.

A hotbed of creative development, Bloomsbury is filled with pioneers of all types. The 2019 Festival shines a light on some of their amazing developments, alongside Bloomsbury's own unique homage to the moon.

Look out for :

- **Moon events** - music and performance, street parties, UCL's Mullard Space project, night-time animals, witches and gothic stories;
- **Small Steps** - including New Wave artists, technological developments, and new skills to try out for yourself;
- **Giant Leaps** - projects tackling the grand challenges of our times including toxic politics, climate change, medicine and - remarkably - living on the moon!

I hope you find this year's Festival enlightening, engaging and most of all fun!

Kate Anderson, Festival Director

PRINT SPONSOR:



Luke Jerram's Museum of the Moon features during the festival. It will be suspended above Store Street (see pages 12/13) and then appear at Holy Cross Church - look out for the moon symbol throughout the brochure.

Luke Jerram's Museum of the Moon was co-commissioned by a number of creative organisations brought together by Luke Jerram and Norfolk & Norwich Festival. These include: At Bristol, Kimmel Center, Lakes Alive, Provincial Domain Dommelhof, Brighton Festival, Greenwich+Docklands International Festival, Without Walls, Les Tombées de la Nuit, Rennes and Cork Midsummer Festival. The artwork has also been created in partnership with the UK Space Agency, University of Bristol and The Association for Science and Discovery Centres.

Whilst every effort is made to ensure the accuracy of the programme, occasionally changes may occur that are beyond our control. Programme correct at time of printing.

COVER IMAGE: Photography by Scholars at Sir Hubert von Herkomer Arts Foundation; vonherkomerfoundation.org

INFORMATION

Box Office

bloomsburyfestival.org.uk

Tel: 020 3108 1000 (Mon-Fri 12 noon – 5pm)

Some event booking not available by phone.

Advanced bookings until 6pm the day before the event.
Remaining tickets released on the door.

Free and Ticketed Events

Over 60% of the Festival is FREE. Just turn up events do not require tickets.
FREE but pre-booking is recommended events have limited capacities.

Concessions

£2 off where ticket prices are over £5 (under 16s, senior citizens, unemployed patrons, disabled people and full time students).

Access

Information is available at venue websites or from
admin@bloomsburyfestival.org.uk.

The Weather

Our outdoor events will continue whatever the weather unless safety is compromised.

Tell Us What You Think

Look out for feedback forms at the Festival or fill in our online survey afterwards - we'd love to know what you think.

MADE IN



BLOOMSBURY

2 amazing day-long hubs of world-changing science, tech and debates - see pages 30 & 36.

TWO arty street parties this year - see pages 12 & 18.

BIG BOOK OUT

A series of fascinating literature events with a distinctly Bloomsbury angle, presented with My Bloomsbury Hotel.

Over 60% of activities are FREE

STORE STREET HOUSE BAND

Catch a sneak peak of the Store Street House band at St Giles' Hotel on Wed 2 Oct, 6pm as part of our regular Music at St Giles series.

NEW WAVE: SHOWCASING NEW TALENT

We support the development of bright new talent emerging from world-famous local universities including RADA and Slade School of Art. Look out for our NEW WAVE lunchtime series, bold new theatre and exhibitions.





Prepared by
Garnett & Partners



1. **Arts Catalyst**
74 - 76 Cromer Street, WC1H 8DR
2. **Bertha DocHouse**
Curzon Bloomsbury, The Brunswick, WC1N 1AW
3. **Bloomsbury Institute**
7 Bedford Square, WC1B 3RA
4. **Bloomsbury Publishing**
50 Bedford Square, WC1B 3DP
5. **Bloomsbury Theatre Studio**
15 Gordon Street, WC1H 0AH
6. **Brunei Theatre SOAS**
Thornhaugh Street, WC1H 0XG
7. **The Building Centre**
Store Street, WC1E 7BT
8. **Chapel Playhouse**
308 - 312 Grays Inn Road, WC1X 8DP
- FESTIVAL HUB (Sunday 20 Oct):**
9. **Conway Hall**
25 Red Lion Square, WC1R 4RL
10. **Coram's Fields**
93 Guildford Street, WC1N 1DN
- HEADLINE EVENT (Sunday 13 Oct):**
11. **Cromer Street WC1H**
12. **The Crypt Gallery**
Euston Road (Entrance in Duke's Rd), NW1 2BA
13. **Foundling Museum**
40 Brunswick Square, WC1N 1AZ
14. **Francis Crick Institute**
1 Midland Road, NW1 1AT
15. **The Grant Museum of Zoology**
UCL Ruckerfeller Building, 21 University St, WC1E 6DE
16. **The Harrison pub**
28 Harrison Street, King's Cross, WC1H 8JF

17. **Holborn Library**
32 - 38 Theobalds Road, WC1X 8PA
- FESTIVAL HUB (Saturday 19 Oct):**
18. **Holy Cross Church**
98 Cromer Street, WC1H 8JU
19. **The Horse Hospital**
Colonnade, WC1N 1JD
- HEADLINE EVENT (Sunday 20 Oct):**
20. **Kimpton Fitzroy London**
1 - 8 Russell Square, WC1B 5BE
21. **Lincoln's Inn Fields WC2A**
22. **London House**
Goodenough College, Mecklenburgh Square, WC1N 2AB
23. **Lumen URC**
88 Tavistock Place, WC1H 9RS8
24. **The Marquis Cornwallis**
31 Marchmont Street, WC1N 1AP
25. **Mary Ward Centre**
42 Queen Square, WC1N 3AQ
26. **The Music Room**
49 Great Ormond Street, WC1N 3HZ
27. **My Bloomsbury Hotel**
11-13 Bayley Street, Bedford Square, WC1B 3HD
28. **Newman House**
111 Gower Street, WC1E 6AR
29. **October Gallery**
24 Old Gloucester Street, WC1N 3AL
30. **Outside 18 New North Street, WC1N 3PJ**
31. **The Penn Club**
1 - 23 Bedford Place, WC1B 5JJ
32. **The Petrie Museum of Egyptian Archaeology**
UCL Malet Place, WC1E 6BT

33. **The Place**
17 Duke's Road, WC1H 9PY
34. **Pushkin House**
5a Bloomsbury Square, WC1A 2TA
35. **Russell Square WC1B 5BG**
36. **Senate House, University of London**
Malet Street, WC1E 7HU
37. **Spaghetti House**
20 Sicilian Avenue, WC1A 2QD
38. **St George's Gardens**
Heathcote Street, WC1N 2NU
39. **St Giles in the Fields (Just off of Map)**
60 St Giles Hight Street, WC2H 8LG
- HEADLINE EVENT (Friday 11 Oct):**
40. **Store Street WC1E**
41. **Thenga Café**
120 Cromer Street, WC1H 8BS
42. **UCL Art Museum**
Gower Street, WC1E 6BT
43. **UCL Cancer Institute**
Paul O'Gorman Building, 72 Huntley St WC1E 6DD
44. **Wellcome Collection**
183 Euston Rd, NW1 2BE
45. **The Wiener Library**
29 Russell Square, WC1B 5DP
46. **William Goodenough House**
Goodenough College, Mecklenburgh Square, WC1N 2AN

Pin positions are approximate - please check exact venue locations on a detailed map.



MUSEUM OF THE MOON

Museum of the Moon is a stunning internally lit sculpture by artist Luke Jerram. Measuring 7 metres in diameter it features meticulously detailed NASA imagery of the lunar surface and an evolving soundscape. There'll be lots to see and do Under the Moon as you revel in this impressive lunar installation.



Holy Cross Church

Sun 13, 1pm - 8pm; Mon 14, 11am - 8pm;
Tues 15, 11am - 5pm; Wed 16, 11am - 1pm;
Thurs 17, 11am - 5pm; Fri 18, 2pm - 6pm;
Sat 19, 11am - 6pm

FREE - Just Turn Up

YOGA UNDER THE MOON WITH ONE KX

Stretch out under Luke Jerram's installation with a yoga class that connects to the moon above.



Mon, Tues, Wed & Thurs mornings, 8am
Mon, Tues & Thurs lunchtimes, 1pm

£12

SIR HUBERT VON HERKOMER - SCHOLAR PHOTOGRAPHY

An exhibition of work by photography scholars showing their process in creating the Bloomsbury Festival's lead image as featured on the front cover of the brochure.

A Bloomsbury Festival Commission.

Thenga Cafe

Fri 11 - Fri 18, 11am - 5pm; Sat 19, 11am - 3pm

FREE - Just Turn Up

NEW WAVE: LOUIS BENNETT - ART PRIZE 2019

A specially commissioned series of paintings by competition winner Louis Bennett in the medium of oil on paper, responding to the theme Small Steps and Giant Leaps. The paintings will also be a response to Louis's research into Bloomsbury's history referencing the architecture. In his paintings, Louis seeks to collapse different eras of British social history into a single image plane.

Louis has just completed his first year studying an MA in Fine Art (painting) at Slade School of Art. His practice is directly informed by British history and politics and might be described as postmodern history painting.

A Bloomsbury Festival Commission, supported by Boodle Hatfield LLP.

Senate House, Crush Hall

Fri 11 & Sat 12, Mon 14 - Sat 19 Oct, 10am - 9pm

FREE - Just Turn Up

26 LEAPS

Writers group 26 in association with Bloomsbury Festival present 26 Leaps, a project profiling 26 Bloomsbury people from past and present that have made a great leap in their respective endeavours. Each person has been paired with a writer from 26 who will then compose a piece of creative writing profiling them that will be published online. Discover the stories of these amazing people whose small steps have turned into giant leaps. (See also page 15).

A Bloomsbury Festival Commission.

Published online at bloomsburyfestival.org.uk & 26.org.uk

A MURAL FOR CROMER STREET - MOHAMMED ALI

Inspired by the residents of Cromer Street, internationally acclaimed graffiti artist Mohammed Ali creates a stunning and thought-provoking piece of public art.

A Bloomsbury Festival Production.

Cromer Street

Sun 13 - Sun 20 Oct

FREE - Just Turn Up

IMAGINING MOUNTAINS/SMALL STEPS AND GIANT LEAPS

An installation of film, illuminated sculptures, and audio works by artist Richard Sharples made in collaboration with poet Joanna Clark. The work explores the festival theme small steps and giant leaps by celebrating the creative process. It traces the development of a work of art from the glint of an idea to completion.

A Bloomsbury Festival Commission, supported by Goldenstone.

St Georges Gardens

Thurs 17 - Sun 20 Oct, 7 - 9pm

FREE - just turn up

WRITERS FROM 26 IN RESIDENCE

Members from award-winning writers' 26 group will attend festival events daily to write creatively, engagingly and objectively about everything they see going on around them.

A Bloomsbury Festival Commission.

Published online at bloomsburyfestival.org.uk & 26.org.uk



IN PARADISE - A SOLO SHOW BY MARGARITA GLUZBERG

It is 40 years since Margarita emigrated to the UK from the Soviet Union, at the age of 10. This was both a small step, and a giant one. This exhibition is a reflection on her childhood, from her new country of residence, via the lens of the seminal film 'Stalker' by Tarkovsky.

Pushkin House

Sat 12, 1pm - 6pm; Thurs 17 & Fri 18 Oct, 11am - 5pm; Sat 19, 6pm - 9pm

FREE - Just Turn Up

ON EARTH IN CAMDEN - IN THE AGE OF THE MOON LANDING

As we mark the 50th anniversary of the moon landing, this exhibition explores life in Camden in the late 1960s.

Holborn Library

Fri 11, 10am - 5pm; Sat 12, 11am - 5pm; Mon 14 & Tues 15, 10am - 6pm; Thurs 17, 10am - 7pm; Fri 18, 10am - 5pm

FREE - Just Turn Up

VICTORIAN BLOGGING - THE PAMPHLETEERS WHO DARED TO DREAM OF A BETTER WORLD

This exhibition explores how nineteenth-century pamphlets and their free-thinking authors have ignited revolutions, overthrown governments and altered the course of history.

Conway Hall

Fri 11 Oct - Sun 20 Oct, 9am - 9pm

Free - Just Turn Up

A MOON WITH A VIEW: BEING HUMAN

Wellcome Collection's new permanent gallery Being Human features Refugee Astronaut III by Yinka Shonibare CBE. Dressed in an elaborate spacesuit, the monumental figure Refugee Astronaut III contrasts with their hastily-gathered net of possessions. Who are they? What has caused their hurried flight?

Wellcome Collection

Fri 11 Oct - Sun 20 Oct, 10am - 6pm

FREE - Just Turn Up

THEY WALKED IN MOONLIGHT

An audio walk, by Dr Romany Reagan, through St George's gardens. Take a journey around the gardens and graves listening to tales of the moon as told through folklore, legends, and nursery rhymes.

Download audio at bloomsburyfestival.org.uk.

St Georges Gardens

Fri 11 - Sun 20 Oct, 8am - 6.30pm

FREE - Just Turn Up

TEN THOUSAND DIFFICULTIES DO NOT MAKE ONE DOUBT - THE LIFE OF JOHN HENRY NEWMAN

An exhibition showcasing the work of Cardinal John Henry Newman, who had a profound impact on the relationship between the Church of England and the Catholic Church.

Newman House

Sat 12 & Mon 14 - Sat 19 Oct, 10am - 4.30pm

FREE - Just Turn Up

TALES FROM THE CRUST - IGNACIO ACOSTA

A new exhibition by artist Ignacio Acosta exploring the politics of extraction of minerals across the planet. Featuring documents, films, photographs, maps and objects.

Arts Catalyst; Fri 11 - Sat 19 Oct, 12pm - 6pm

FREE - Just Turn Up

CRAFT & GRAFT: MAKING SCIENCE HAPPEN

Take a look behind the scenes at Britain's biggest lab for an eye-opening glimpse of the people behind the science.

Frances Crick Institute

Fri 11, Sat 12, Thurs 17, Fri 18 & Sat 19 Oct, 10am - 4pm; Wed 16 Oct, 10am - 8pm

FREE - Just Turn Up

LIFE AND MORE

A group exhibition by sculptors from the Mary Ward Centre including figurative and abstract work, often inspired by the life model. Some pieces will be for sale.

Spaghetti House, Sicilian Avenue

Wed 16 - Sun 20 Oct, 11.30am - 6pm

FREE - Just Turn Up

ANCIENT LIGHT

Melanie King's solo exhibition *Ancient Light* is a series of analogue photographs of the night sky, captured in dark sky areas such as Iceland, Italy, Ireland and Spain.

Lumen URC

Thurs 17, 6pm - 9pm (preview); Fri 18 - Sat 19 Oct, 9am - 4pm

FREE - Just Turn Up

Moonlight On Store Street

A Night-time Street Party with a Twist

Bloomsbury Festival Production

Back by popular demand, the Festival hosts a night-time street party with a twist to launch Bloomsbury Festival 2019.

Only a stone's throw from the West End, Store Street is a hidden gem with a very special local flavour. For one night only, Moonlight on Store Street will transform the street into a moonlit stage to celebrate all things lunar, dazzling those of all ages as they bask in the presence of artist Luke Jerram's *Museum of the Moon*!

Take some small steps or giant leaps and join in the fun participative dance, make and wear a moon hat, listen to the Festival's moon inspired Store Street House Band and watch a new commissioned dance work by Subathra Subramanian working with Westminster Kingsway College students. Look out for artists of all types interacting with *Museum of the Moon* and just lie back on the moon loungers, lift your eyes to revel in the presence of the Moon at very close quarters.

Store Street's intimate independent shops, cafes and businesses will open their doors to reveal an array of moon-related creative delights including performance, reflection and lunacy!

Moonlight on Store Street is a night that is sure to be out of this world!

Only a short stroll from Tottenham Court Road and Goodge Street.

Supported by The Bedford Estates, Schroders Real Estate, Store Street, Hurford Salvi Carr, and Boodle Hatfield LLP.

Friday 11 Oct

6pm - 9.30pm

FREE - Just Turn Up





Family

FAMILY ART DAY

A playful and exploratory family learning session with art making and storytelling which engages with October Gallery's current exhibition and is inspired by the 1969 moon landing.

October Gallery

10am - 11.30am; *FREE - Just Turn Up*

OVER THE MOON - UCL'S FAMILY MUSEUM TRAIL

Find out more about the moon in ancient Egyptian culture, the animals that roam at night, and artists that have responded to the lure of moonlight, in this interactive museum trail. In partnership with gobbledegook and the UCL Mullard Space Science Laboratory.

**The Grant Museum of Zoology
UCL Art Museum
The Petrie Museum of Egyptian Archaeology**

1pm - 5pm; *FREE - Just Turn Up*

Walks, Talks & Tours

SHAPING BLOOMSBURY

This walk is a feast of visual variety, magnificence and interest. It enters the Southampton/Bedford Estate from the south and takes a mazy path northwards, up to the Euston Road.

Meet at Lincoln's Inn Fields

11am; *FREE - but pre-booking is recommended*

PHILOSOPHICAL IDEAS THAT CHANGED THE WORLD

Philosophers from the London School of Philosophy showcase a feast of thoughts and ideas that have had a significant impact on the way we conceive of ourselves and the world.

The Marquis Cornwallis

12pm; *FREE - but pre-booking is recommended*

THE DROOPING BUDS OF BLOOMSBURY

A guided walk exploring the theme of children's representation and social development in Bloomsbury from the eighteenth century to the present day.

Meet at Russell Square Tube Station

1.30pm; *FREE - but pre-booking is recommended*

26 LEAPS IN CONVERSATION

Writers from the group 26 will be in conversation with selected Bloomsbury people whose small steps turned into giant leaps. See *26 Leaps* on pg 9.

London House, Goodenough College

2pm; *FREE - but pre-booking is recommended*

Literature

SCRAWL: A WRITING WORKSHOP

A writing workshop led by local, spoken word ensemble, The Bloomsbury Peculiars. Participants will have the chance to submit their written pieces for performance in Cabaret Peculiar (see pg 33).

London House, Goodenough College

11.30am; *Tickets: £5*

JAY MERILL AND FRIENDS

Jay Merrill and other writers will give live readings of their short stories, followed by a Q&A with the audience, covering literary and other aspects of short story writing, such as performance and publication.

London House, Goodenough College

4.30pm; *FREE - but pre-booking is recommended*

BIG BOOK OUT: CURSED BRITAIN - THOMAS WATERS

Witchcraft has become as diverse as modern Britain itself and is on the rise. From the rural world of Georgian Britain through the immense territories of the British Empire, to the multicultural present day, Thomas Waters explores this phenomenon.

My Bloomsbury Hotel

6pm; *FREE - but pre-booking is recommended*



Music

NEW WAVE LUNCHTIME CONCERT: GUANGMEI CHEN

Award-winning Chinese pianist Guangmei Chen presents an emotionally charged and virtuosic lunchtime concert.

The Music Room

1.10pm; *FREE - but pre-booking is recommended*

MUSIC IN SPACE - GOODENSEMBLE

The universe has long been a fascinating subject amongst composers. London's hottest young symphony orchestra, Goodensemble make a welcome return to Bloomsbury Festival, under the baton of Owen Ho, with a programme of works by Vaughan Williams, Rodrigo, and Mahler, all of which in their own ways connect to our universe.

London House, Goodenough College

7.30pm; *Tickets: £12 (£10)*

Exhibitions

ASTRONOMICAL LIGHT: BRING YOUR OWN BEAMER

Lumen Studios present Bring Your Own Beamer - a one night exhibition curated by Lumen in which many artists bring their own projectors to showcase their work.

The Crypt Gallery

6pm; *FREE - Just Turn Up*

Performance & Film

INDIGENOUS ELECTRONIC ARTS AND FOREST GUARDIANS IN BRAZIL

Native Spirit Festival present Arte Electronica Indigena. Short films with Dr Thea Pitman and NGO Thydewa director, Sebastian Gerlic. Interactive Digital Body Painting. Guarding The Forest, documentary on the frontline with Amazonian Guajajara Force against illegal loggers.

Institute for Latin American Studies, Senate House

2pm; *Donations: £10 on door*

THE GLASS ELEPHANT - GOODENOUGH THEATRE COMPANY

Desperately trying to overlook her husband's poorly timed identity crisis, Clara tries to cope as Christmas day grows more and more bizarre. A brand new comedy drama by Anjali Bhat.

Chapel Playhouse

3.30pm; *Tickets: £8 (£6)*

AIDS: A PRIEST'S TESTAMENT

Shot for Channel 4 in the Summer of 1987, this compelling 52-minute documentary tells the story of Rev. Bernard J. Lynch and his ministry to people with AIDS in New York. Followed by a Q&A with Fr Bernard Lynch and curator/writer Ash Kotak.

The Horse Hospital

5pm; *FREE - but pre-booking is recommended*

13th NATIVE SPIRIT INDIGENOUS FILM FESTIVAL - GALA OPENING NIGHT

SOAS World Languages Institute partner with Native Spirit, the UK's first and largest presenter of Indigenous Language Cinema, and The Philippines Embassy for UNESCO IYIL2019 with speakers, textile display, performers. Main film K'na The Dreamweaver.

Full programme: nativespiritfoundation.org

SOAS Brunei Theatre

6.30pm; *Tickets: £10 on door*

BRIGHT CLUB: FAILURE

Join Digital Science, UCL, and researchers from the Bloomsbury area for a night of lab-based laughter as they share with us how small steps in their own research is helping them stride towards giant leaps in the world around us.

Chapel Playhouse

7pm; *Tickets: £8 (£6)*

Bloomsbury Festival and Camden Alive present

Cromer Street Welcomes the Moon

A Creative Family Street Party!

Luke Jerram's Museum of the Moon is revealed in Holy Cross Church on 13 October - the night of the full moon. Cromer Street celebrates with music, dance, exhibitions, activities and a host of food stalls.

A creative street party for everyone to enjoy, Cromer Street Welcomes the Moon presents some of the best local talent on the traffic-free street and popping up in shops, arts, and community spaces. Listen to captivating Bengali music, make your own moon creations, celebrate a new mural by Mohammed Ali, enjoy performance poems and rap, and a fabulous new dance from Westminster Kingsway students choreographed by Suba Subramanian. Plus much more!

At 6.30pm as the sun-sets and the October full moon rises, join a lunar inspired parade led by Argyle School as it winds its way along the street.

Sunday 13 Oct
Main street events: 4pm - 7pm
FREE - Just Turn Up

PLUS

- Holy Cross Church:**
- 1 - 8pm Museum of the Moon – Luke Jerram 
 - 2pm Mishteaze - The Land of Sweets - Indrani Datta Dance (Kathak)
 - 3pm Shuffle, The Place's junior youth dance company perform a new work created with director Ihsaan De Banya.
 - 4pm Drawing Workshop Under The Moon – Sunny Art Centre

One KX:

- Photography exhibition in Thenga Cafe.
- Yoga and Pilates taster sessions.
- 3pm Once in a Blue Moon - Payal Ramchandani (Lecture Demonstration (£8) & Workshop (£2) pre-booking recommended)

On the Street:

- 4pm Unveiling of A Mural for Cromer Street - Mohammed Ali

See website for full performance details.



Camden Alive is a programme of arts and cultural events that celebrates the people of Camden. Camden Alive is part of the Mayor's London Borough of Culture and is a Mayor's Cultural Impact Award winner. London Borough of Culture is a Mayor of London initiative with support from the City of London Corporation's Charity, City Trust Bridge and Airbnb.

Performance & Film

NATIVE SPIRIT DECOLONIAL LOVE: TWO SPIRIT AND INDIGIQUEER

Film screenings, readings and panel in a 3-part programme covering contemporary Indigenous cultural autonomy, gender/ID.

Full programme: nativespiritfoundation.org

The Horse Hospital

2pm; Tickets: £8 in advance / £10 on door

BODIES IN SPACE

An atmospheric dance performance that stretches time and your imagination. Performed to a live soundtrack created from light beamed back from NASA space probes, three dancers take you to deep space.

London House, Goodenough College

2pm; Tickets: £8 (£6)

APOLLO 11

Experience previously unseen footage of NASA's daring first mission to the moon in the documentary Apollo 11, the must-see cinematic event of this summer.

Bertha Dochose at Curzon Bloomsbury

4pm; Tickets: £9 (£7)

BLUE

An abstract fairy tale underlining why it's important to reach out when you're not OK. Using poetry, clowning, cardboard and a lobster called Spock, we follow Blue on a journey into space, exploring her experiences with mental health.

Chapel Playhouse

7pm; Tickets: £10

BLOOMSBURY MOONWALK

Travel writer Rob Self-Pierson spent 2009 walking around Britain by the light of the full moon – to repair his broken heart and learn more about our lunar cousin. Join Rob on a walk around Bloomsbury to celebrate the launch of his book, *Moonwalking*.

Starts outside 18 New North Street

8pm; FREE – but pre-booking is recommended

Music

NEW WAVE LUNCHTIME CONCERT: XIAOWEN SHANG

Inspired by the 50th anniversary of the moon landing, Royal Academy of Music scholarship pianist Xiaowen Shang performs moon inspired music, including traditional Chinese music and works by Beethoven, Chopin and Crumb.

The Music Room

1.10pm; FREE – but pre-booking is recommended

Workshops

MUSIC WORKSHOP WITH BALUJI SHRIVASTAV OBE

Multi-instrumentalist Baluji Shrivastav OBE from the Inner Vision Orchestra (the UK's only professional blind ensemble) invites blind and visually impaired people to come and make music together in a friendly environment.

Kindly supported by the GLFB and the Worshipful Company of Spectacle Makers.

William Goodenough House, Goodenough College

2pm; FREE – but pre-booking is recommended

Walks, Talks & Tours

SMALL STEPS TOWARDS FREEDOM: LITERARY BLOOMSBURY IN THE BLITZ

Guided walk around Bloomsbury with Camden tour guide, Oonagh Gay, using contemporary novels to show how the Blitz led to more freedom for women to lead their own lives.

Starts outside Russell Square Tube Station

11am; FREE – but pre-booking is recommended

SMALL STEPS AROUND ST GILES

Take a few small steps in a fascinating walk around this ancient and notorious district with local resident and tour guide Richard Cohen.

Starts at entrance of St Giles in the Fields Church

11am (plus Sat 19 Oct, 2pm)

FREE – but pre-booking is recommended

WILLIAM MORRIS AND HIS BLOOMSBURY CIRCLE

A whole generation before the famous Bloomsbury Group, William Morris and his circle, living and working in Bloomsbury, were pioneers in the arts, architecture, education and socialism. Alec Forshaw, local resident and historian, will explore their remarkable achievements.

London House, Goodenough College

3pm; FREE – but pre-booking is recommended

Special Event

PRINT THE MOON - LUMEN

Astronomer Paul Hill of Sirius Astronomy will lead a skywards guided tour, talking lunar science and helping us to view the moon through a collection of telescopes. Then you will be guided in taking a unique photograph of the moon to keep which will be printed out using an instant-print lab.

Secret location in Bloomsbury

7.30pm; Tickets: £30

**Bishop
& Sewell**

Fisher Meredith

Bishop & Sewell
are proud to support
The Bloomsbury Festival



**Beautifully
straightforward
legal advice**

bishopandsewell.co.uk

Special Events

MIRRORING THE MOON

Contemporary Art Curator Rob La Frenais has recently undertaken a comprehensive survey of arts and cultural activity surrounding the moon since humans landed on it. He hosts an evening of performances and talks that respond to the Moon featuring a new dance piece from Vilma Tihlä with music by Joel Järventausta, a performance of Rob Cope's "Gods of Apollo" jazz project, and a presentation from artist Simon Faithfull.

A Bloomsbury Festival Production.



Holy Cross Church

7pm; Tickets: £8 (£6)

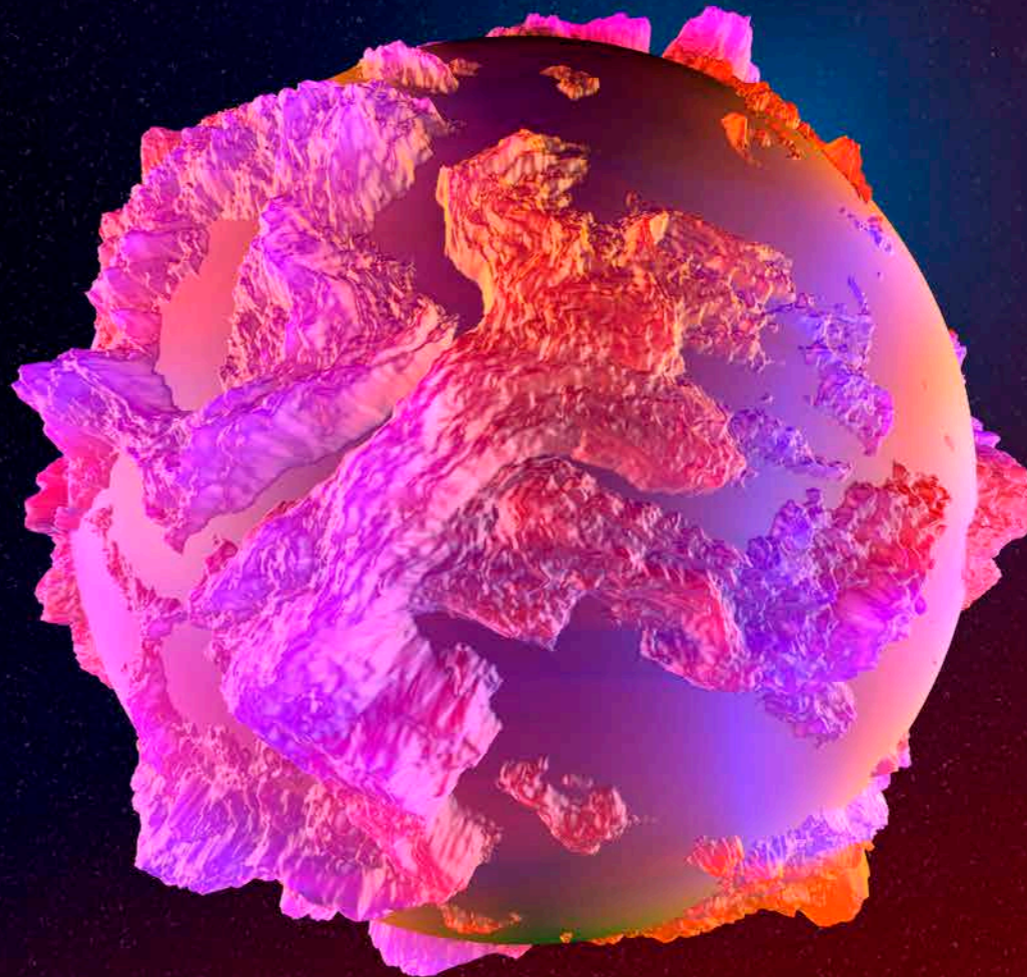
SMALL STEPS, HUGE IMPACT: THE PURSUIT OF PERSONALISED MEDICINE

Cancer Research UK invites you to join scientists at the UCL Cancer Institute for an immersive lab experience to explore a new era of treatment - personalised medicine.

UCL Cancer Institute

Bookable slots every 30 mins
from 5.30pm - 7.30pm

FREE - but pre-booking is recommended



Performance & Film

WHILE YOU ARE HERE

A new play for dance written by Eve Leigh and an exciting collaboration between choreographer Jonathan Goddard and director Lily McLeish. Combining dance, text and animation this compelling new piece makes us question our relationship to environment, and the connections, legacies and inheritance passing through the centuries.

The Place

7.30pm (and Wed 16 Oct); Tickets: £17 (£13)

Literature

PARIS AMONG THE ARTISTS WITH MICHAEL PEPPIATT

Join an unmissable literary evening on how living somewhere other than where you were born is a giant leap, and making a new life comes not all at once, but in a series of small steps.

Bloomsbury Publishing

6pm; Tickets: £15 (includes book & glass of wine)

Music

NEW WAVE LUNCHTIME CONCERT: TARA VISCARDI

Tara showcases the versatility of the harp in a recital featuring works by Bach, Hindemith, Glinka, Handel and Mchedelov.

The Music Room

1.10pm; *FREE - but pre-booking is recommended*

Small Steps, Huge Impact: The Pursuit of personalised Medicine

Tuesday 15 October

bloomsburyfestival.org.uk

23

SHOPFRONTS of LONDON



Walks, Talks & Tours

A VERITABLE CELEBRATION OF BURTON'S ENDEAVOUR, PROGRESS, AND PIONEERING ACHIEVEMENTS

A walking tour following the progress of Bloomsbury's most prolific Georgian developer, James Burton, highlighting points of historical interest along the way.

Starts at Coram's Fields (Guildford St entrance)
1pm; *FREE - but pre-booking is recommended*

THE ENDEAVOUR TO COLLECT AND PRESERVE THE HOLOCAUST: TOUR OF THE WIENER LIBRARY AND ARCHIVES

A free tour of the world's oldest archive and library of material relating to the Holocaust and Nazi Era.

The Wiener Library
1pm (and Thurs 17 & Fri 18)
FREE - but pre-booking is recommended

EINSTEIN ON THE RUN: HOW BRITAIN SAVED THE WORLD'S GREATEST SCIENTIST

Andrew Robinson discusses his new book: the first account of the role Britain played in Albert Einstein's life—by inspiring his teenage passion for physics, by making him world famous in 1919, and by giving him refuge from Nazi death threats.

Bloomsbury Institute
5.30pm; *FREE - but pre-booking is recommended*

Music

NEW WAVE LUNCHTIME CONCERT: PUPPETS, INTERPLANETARY TRAVEL, AND BACH

A kaleidoscopic cross-artform performance, where classical and contemporary works are re-invented through performance art, animation, and audio-visual projections. Featuring students of the Royal Academy of Music, curated by Belle Chen.

Chancellors Hall, Senate House
1.10pm; *FREE - but pre-booking is recommended*

NEW WAVE LUNCHTIME CONCERT: EARTH UNDER THE MOON

Hannah Crerar sings a range of songs by Schubert, Brahms, Schumann, Britten and Howells, compiled to tell the story of the fear of nightfall, acceptance of the dark and lullabies to send the now calm character to sleep.

The Music Room
1.10pm; *FREE - but pre-booking is recommended*

Literature

BIG BOOK OUT: MOONWALKING - OFFICIAL BOOK LAUNCH

The story of the 13 full moons of 2009, and the young man they helped to rebuild. With Q&A, reading and book signing from author Rob Self-Pierson.

My Bloomsbury Hotel
6.30pm
FREE - but pre-booking is recommended

Performance & Film

THE WATER IS WIDE - INGENIOUS PURPOSE

A rehearsed reading of a new play by Patrick Sandford for anyone who knows the facts of life. Three very different sex lives - one tricky, one progressing, one joyous. But which is which? And how can each take the next step?

Pushkin House
1pm; *FREE - but pre-booking is recommended*

SPIN - ADVENTURES IN SPOKEN WORD

Join Apples and Snakes' word-wizards as they cook up amazing ways to play with storytelling and poetry. SPIN features Jan Blake, Paul Cree, and Amina Jama, a trio of leading performers each with their own distinct style.

For children and families (suitable for ages 5+).
Holy Cross Church
4.30pm; *Tickets: £3*

FILM SCREENING: STALKER (1979)

A screening of a 1979 Soviet science fiction film Stalker, directed by Andrei Tarkovsky, introduced by director and screenwriter Ben Hopkins.

In Russian with English subtitles.
Pushkin House
6.30pm; *Tickets: £10 (£7)*

WHILE YOU ARE HERE

(See page 23)
The Place
7.30pm (and Tues 15 Oct); *Tickets: £17 (£13)*

GEOMETER - REROOTED DANCE COLLECTIVE PRESENTED BY AKADEMI

The ground-breaking ReRooted Dance Collective present their first evening of work, featuring original, experimental Indian classical dance choreography responding to the themes of space and time.

Holy Cross Church
8pm; *Tickets: £12 (£10)*

Music

NEW WAVE LUNCHTIME CONCERT: MUSIC FOR YOUTH YOUNG ARTISTS' PLATFORM

Talented young players present a colourful programme of works connected with this year's Bloomsbury Festival theme 'Small Steps and Giant Leaps'. In partnership with Music for Youth.

Foundling Museum

1pm; *FREE (with museum entry)*

MAGICAL RAGAS AND POETRY FOR THE MOON

Open Your Heart to the Moon - a special performance of moon inspired ragas, on sitar, by virtuoso multi-instrumentalist Baluji Shrivastav OBE accompanied by Yousuf Ali Khan on tabla. Opening with a sung poem by Linda Shanovitch, accompanied by dilruba.



Holy Cross Church

8pm; *Tickets: £12 (£10)*

Literature

MOON POEMS FROM THE DARKER SIDE

Awarded, emerging poets making visible the dark side of the moon. Linked moon poems bring healing, light and beauty to mental health, migration, queerness, exclusion and sexual abuse in childhood.

The Harrison pub

7pm; *FREE - but pre-booking is recommended*

Walks, Talks & Tours

THE ENDEAVOUR TO COLLECT AND PRESERVE THE HOLOCAUST: TOUR OF THE WIENER LIBRARY AND ARCHIVES

(See page 25)

The Wiener Library

1pm (and Wed 16 & Fri 18)

FREE - but pre-booking is recommended

FOLLOWING THE FOOTSTEPS OF FRANCES TAYLOR

Frances Taylor provided physical and spiritual support to many since 1800. Come along to experience how her little acts brought about a huge impact on the life of the poor in the area.

Starts at corner of Percy Street and Tottenham Court Road

5.30pm; *FREE - but pre-booking is recommended*

BIG BOOK OUT: SHOPFRONTS OF LONDON WITH ELEANOR CROW

Illustrator Eleanor Crow celebrates the small neighbourhood shops of London, from cheesemongers to chippies, and champions the enduring culture of Britain's small shops.

My Bloomsbury Hotel

6.30pm; *FREE - but pre-booking is recommended*

WHAT THE NATION WOULD NOT DO, A WOMAN DID: THE LIFE OF JANE, LADY FRANKLIN

Hear about this remarkable woman's unprecedented course through Victorian society, in the house where she grew up.

The Penn Club

7pm; *FREE - but pre-booking is recommended*

A MOON WITH A VIEW: PANEL DISCUSSION - SPEECH-TO-TEXT

What is it to be a traveller to an unknown world? How do our perspectives on our homeland change when we reach new destinations? This discussion considers different perspectives on our planet.

Wellcome Collection

7pm; *FREE - but pre-booking is recommended*

Performance & Film

BRING THEM HOME

An award-nominated space adventure set in an alternate 1970s, where players co-operate and compete to bring an astronaut back from the stars. Forge alliances, share information, stab each other in the back - everything is on the table in this immersive gaming experience.

Conway Hall

7pm; *Tickets: £12*



Walks, Talks & Tours

THE ENDEAVOUR TO COLLECT AND PRESERVE THE HOLOCAUST: TOUR OF THE WIENER LIBRARY AND ARCHIVES

(See page 25)

The Wiener Library, 1pm (and Wed 16 & Thurs 17)

FREE - but pre-booking is recommended

WITCHES AND THE MOON

The full moon was the witches' sabbat, when potions were mixed and illicit coven meetings took place. This illustrated lecture by Dr Christina Oakley Harrington looks at past beliefs, folklore and the effect on Wiccan practice today.

Chancellors Hall, Senate House

1pm; Tickets: £8 (£6)

MOON: ART, SCIENCE, CULTURE

Join astronomer Dr Robert Massey and art historian Dr Alexandra Loske for an illustrated talk about how our obsession with the Moon has manifested itself in the sciences and visual arts.

London House, Goodenough College

6.30pm; Tickets: £8 (£6)

Music

REVOLUTIONARY LEAPS

Chopin transformed the traditional etude from a dry, technical exercise into an emotionally charged musical story, a truly revolutionary leap for the piano. Australian concert pianist John Granger Fisher performs the complete Etudes.

Chancellors Hall, Senate House

7.30pm; Tickets: £8 (£6)

Participate

A MOON WITH A VIEW: ACTIVE MAPS

Watch or take part in an audience participation performance led by choreographer Sivan Rubinstein. The journey starts with a visual representation of the world as one home, before we create our own global map through movement, sound and migration, reflecting the constantly changing nature of the world.

Wellcome Collection

3pm; FREE - Just Turn Up

Performance & Film

THE HAMLETMACHINE

Exploring the cross-over between performance art, installation and flash-mob, this new production of The Hamletmachine invites the audience to participate in the interpretation of Heiner Müller's play.

Crush Hall, Senate House

12pm - 2pm & 4pm - 6pm; FREE - just turn up

LUNAR DREAMS

An evening of celestial stories and live soundscapes: join four storytellers and four leading sound artists on a multicultural voyage around the moon's myth and folklore. Featuring the unique and uncanny sound of the theremin.



Holy Cross Church

7.30pm; Tickets: £10 (£8)

UNSIGHTLY DRAG

A Cabaret with a difference presented by collaborating partners Extant, the UK's leading visually impaired theatre company, and Quiplash, a new queer crip (quip) led creative company supporting and taking up space for quip artists and audiences.

Chapel Playhouse

7.30pm; Tickets: £8 (£6)

I AM ECHOBORG

A funny, thought-provoking show created afresh each time by the audience in conversation with an artificial intelligence. Devised by award winning writer/director Rik Lander with conversational systems expert Phil D Hall. Nominated for an Innovation in Storytelling Award at the 2018 Future of Storytelling Summit.

William Goodenough House, Goodenough College

8pm; Tickets: £12 (£10)



Under the Moon

🌙 Festival Hub at Holy Cross Church

Arts and science collide in a fun, engaging day exploring all things moon-related.

There'll be lots to see and do under Luke Jerram's impressive lunar installation Museum of the Moon. Activities for all ages such as interactive workshops, exhibitions, talks and performances include:

Saturday 19 Oct
11.30am - 5pm
FREE - Just Turn Up

Make and See

- Origami stars, rockets and moons with SOAS Origami Society
- Paper space ships with Holborn Community Association (HCA)
- A junk model rocket and fly it to the moon - art and story suitable for children with autism and social communication difficulties with HCA
- Moon-based drawings and mini sculptures by HCA & Autism Art Group
- Ballet about moon energy and cycles

Experience and Learn

- See and hear about real life moon rocks with the Royal Astronomical Society
- Hear about space travel and lunar expeditions with leading specialists from UCL's Mullard Space Science Lab, Birkbeck's Planetary Science and Astrobiology, and NASA
- Experience massive VR star explosions with UCL's Astrophysics students
- Learn about amazing new developments at The Francis Crick Institute
- Enter a space-themed children's storytelling Den with Sir John Soane's Museum
- Find the Mars Opportunity Rover - gaming with Mullard Space Science Lab
- Explore small steps a giant leaps with Cancer Research UK's 'Escape the Lab' immersive experience

Recommended for ages 7+





Family

CREATING SPACE: FAMILY ARCHITECTURAL DESIGN WORKSHOP

Did you know there are architects who design buildings for space? Ever thought about how somebody might live on the moon? In this family workshop parents and children will work together to imagine their own futuristic ideas for lunar architectural spaces and create models of their designs to take home.

The Building Centre
2pm - 4pm (Drop in) ; *FREE - Just Turn Up*

A MOON WITH A VIEW: SATURDAY STUDIO - AUGMENTED REALITY ON THE MOON

Try the tools of augmented reality to explore and create your own objects, in this Moon-inspired Saturday Studio. Suitable for 14 - 19 year olds.

Wellcome Collection
2pm - 3.30pm & 4pm - 5.30pm
FREE - Just Turn Up

Participate

TESTING SITUATIONS - CREATED OUT OF MIND

Learn more about Dementia and cognitive testing through a drop-in exhibition and participatory events including a screening of 'Neva' created with members of Rare Dementia Support groups and researchers from UCL.

Lumen URC
10am - 4pm (drop in); *FREE - Just Turn Up*

TOURIST/EXPLORER

Artist Sarah Fortais continues her performance/mission in Bloomsbury as an astronaut collecting souvenirs and various materials to study.

Various locations
11am - 5pm; *FREE - Just Turn Up*

Walks, Talks & Tours

MEET A SCIENTIST

Meet the scientists, technicians and engineers of the Frances Crick Institute as they pop into the gallery to share behind-the-scenes insights into how they make science happen.

Frances Crick Institute
1pm - 3.30pm (drop in); *FREE - Just Turn Up*

GREAT STRIDES IN MEDICINE

This walking tour will take you on an exploration of Bloomsbury's extraordinary and innovative medical history and give a glimpse of a pioneering and imaginative experiment in social philanthropy.

Starts outside Russell Square tube station
2pm; *FREE - but pre-booking is recommended*

SMALL STEPS AROUND ST GILES

(See page 21)
Starts at entrance of St Giles in the Fields Church
2pm (plus Sun 13 Oct)
FREE - but pre-booking is recommended

NIGHT WALKING WITH DICKENS

A night walk through Dickens' Bloomsbury, plotting a course between three of his dozen or so addresses in Camden. As dusk falls we explore his compulsion to pace the streets of London at night.

Starts Chancery Lane tube station (South entrance)
6.30pm
FREE - but pre-booking is recommended

Literature

BLOOMSBURY AND THE POETS

An exploration with words and music of the poets who have lived and worked in Bloomsbury up to the present day presented by the author of *Bloomsbury and the Poets*, Nicholas Murray, with contemporary poets Christopher Reid, Michèle Roberts and Róisín Tierney.

London House, Goodenough College
12 noon
FREE - but pre-booking is recommended

BIG BOOK OUT: DARK SKIES - TIFFANY FRANCIS

Join author and artist Tiffany Francis as she discusses her new book about nature at night, sharing her travels, adventures and stories from the darker side of the natural world.
My Bloomsbury Hotel
6pm; *FREE - but pre-booking is recommended*



Music

NEW WAVE LUNCHTIME CONCERT: ZHU SUN

Pianist Zhu Sun, hailed for her musical sensitivity and dazzling virtuosity, presents a scintillating programme by Chopin and Ravel.

The Music Room
1.10pm; *FREE - but pre-booking is recommended*


SONGHAVEN: DEMENTIA-FRIENDLY CONCERT

Songhaven has gained a large and devoted following for their fun, relaxed and inclusive afternoon concerts. People living with dementia as well as their carers and companions are warmly welcomed to enjoy top quality performances from professional classical artists, filled with well-loved tunes from a range of genres.

Lumen URC
3pm; *FREE - but pre-booking is recommended*

CAMDEN VOICES

Lauded as 'truly excellent' by Jamie Cullum, one of London's leading vocal groups rekindles the optimism of 1969 with an uplifting evening of soaring harmonies, soulful melodies and infectious grooves under the moon.

 **Holy Cross Church**
7.30pm; *Tickets: £12 (£10)*

Performance & Film

OBLIVION INDUSTRY

A new installation by Jenkin Van Zyl that expands upon his recent film work *Looners*, forming a new filmic chapter informed by the building's 25 year history of counter cultural arts activities, its equestrian history and cavernous architecture.

The Horse Hospital; 10am - 6pm (and 20 Oct)
FREE - just turn up

NEW WAVE THEATRE: DECLAN - ALISTAIR HALL

Jimbo spends his days alone. He thinks about his best friend who has gone missing. He worries about the stranger who is stalking him. One man's account of obsession, love and loneliness.

Bloomsbury Theatre Studio
12.30pm; *Tickets: £5*

MOVE OVER MOON

Sage Dance Company explores new territory in this programme of work choreographed by its members and associates. Plus post show Q & A on the benefits of defying gravity and dancing at any age.

William Goodenough House, Goodenough College
2pm; *FREE - but pre-booking is recommended*

NEW WAVE THEATRE: YELLOW CAKE - WHY THEATRE COMPANY

Radiation is a natural phenomena so what is it about man-made radiation that makes us feel so uncomfortable? So afraid? An exciting new play in development that looks at nuclear energy and its impact on the social psyche.

Bloomsbury Theatre Studio
2.30pm; *Tickets: £5*

NEW WAVE THEATRE: THREE'S A CROWD - BE·WILDER THEATRE

Four clowns. One clapper. One hundred legendary film moments. Sixty minutes and no words. A thrilling joy-ride of commedia dell'arte and a love letter to cinema.

Bloomsbury Theatre Studio
5pm; *Tickets: £5*

CABARET PECULIAR

Join spoken word and music ensemble The Bloomsbury Peculiars for secret stories, facts twisted through fiction and moon tunes inspired by Bloomsbury past, present and future.

William Goodenough House, Goodenough College
6pm; *Tickets: £8 (£6)*

SCIENCE SHOWOFF

London's original science comedy extravaganza comes back to Bloomsbury. Join Steve Cross and eight hilarious geeks for a chaotic evening of stand-up about science and the lives of scientists.

Bloomsbury Theatre Studio
7.30pm; *Tickets: £8 (£6)*

CABARET TO THE MOON

A journey to the Moon featuring comedy cabaret, burlesque, drag, songs, games & more hosted by Oedipussi Rex featuring some of London's most exciting cabaret artists!

Chapel Playhouse
8pm; *Tickets: £10 in advance (£12 on the door)*

Performances & Film

LONDONERS

This documentary celebrates the diverse identities of a group of young Londoners. Produced by RevOlutiOn PrOductiOns, Holborn Community Association, in partnership with Somerset House. Short film followed by Q & A.

1.15pm
FREE - but pre-booking is recommended

TRUTH TO POWER CAFE

A new internationally acclaimed performance event inspired by Harold Pinter and his Hackney Gang. The event combines memoir, image, poetry, music and live testimony from participants speaking truth to power

3.30pm
FREE - but pre-booking is recommended

CHAMBER PHILHARMONIC EUROPE

A colourful programme for string quartet including Mozart's Quartet K465 and works by Janáček and Brahms. Pre-concert talk at 5.30pm with musicologist Peter Quantrill.

6.30pm; Tickets: £12

Exhibitions

LAYERS OF LONDON - COLLECTING HISTORIES

Find stories and histories about your local area and add your own to contribute to this growing online platform.

11am - 5pm (drop in); FREE - just turn up

A LITTLE LIGHT (PAIN) RELIEF

UCL Professor of Pharmacy Ijeoma F. Uchegbu is the Chief Scientific Officer of Nanomerics. Ijeoma talks about revolutionary developments in pain relief encapsulated in nanoparticles - with a little humour.

2.30pm; FREE - but pre-booking is recommended

OFF WORLD LIVING

UCL's Prof Andrew Edkins and Prof Victor Buchli discuss their work in the 'Off World Living Institute'. 50 years after the moon landing, there is a growing wave of international interest in returning, and, perhaps, establish forms of settlement on places like the Moon and Mars.

2.45pm; FREE - but pre-booking is recommended

BEING AND BELIEVING: QUESTIONING RELIGIOUS ATTITUDES TOWARDS LGBT PEOPLE

A discussion chaired by Duncan Bartlett which explores the tension some LGBT people experience in different countries between their sexual identities and religious attitudes.

4pm; FREE - but pre-booking is recommended

Workshops

VISION THE FUTURE

Join the team behind Compassion in Politics to help map out a new vision for our political system and how we will get to it.

3pm; FREE - but pre-booking is recommended

Talks & Discussions

SUNDAY ASSEMBLY

Sunday Assembly is a community that celebrates life by coming together to sing songs, hear inspiring talks and build real connections. We'll be speaking with some exciting innovators who are taking small steps, toward big change.

11am; FREE - Just Turn Up

LAYERS OF LONDON

Specialists from the Institute of Historical Research discuss democratising history. They explore the process of researching, choosing, and publishing local stories and the constantly changing social environment in this historic part of London.

11am; FREE - but pre-booking is recommended

COMPASSION IN POLITICS

From climate change to Trump, the divisions over Brexit, to refugees lost at sea, compassion has been edged out of the political agenda. Compassion in Politics chair a conversation with MP Tulip Siddiq and special guests to discuss this burning issue.

11.30am; FREE - but pre-booking is recommended

THINKING THROUGH PLASTIC

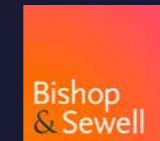
Join the team from UCL's Plastic Waste Innovation Hub - one of eight world-leading research projects exploring new and different ways of making, using, and recycling plastics - for an informative discussion about the current state of plastic and how to use it more sustainably.

1pm; FREE - but pre-booking is recommended

Small Steps, Big Ideas...

Conway Hall Hub 11am - 8pm

Explore today's grand challenges including toxic politics, climate change, medical inventions, inequality, and - remarkably - living on the moon, as we examine the small steps and giant leaps of Bloomsbury pioneers who are paving the way to a better future. Rousing talks, vital debates, thought-provoking performance, and personal empowerment from some of the boldest and bravest voices around, in Bloomsbury's home for those who dare to dream of a better world, Conway Hall.



Fisher Meredith

The Conway Hall Hub is Supported by Bishop & Sewell LLP. Celebrating 40 years! 1979 - 2019






Family

UNDER THE MOON WITH KATE WAKELING

Join poet Kate Wakeling as she reads from her award-winning collection 'Moon Juice' in this playful and interactive poetry reading suitable for all the family.

 Holy Cross Church
1pm; Tickets: £3

Walks, Talks & Tours

MODEST BEGINNINGS, PROUD ACHIEVEMENTS: A BLOOMSBURY PERSPECTIVE

This walk – with Paul Guest – offers a “Bloomsbury perspective” literally, by covering the south of the district from west to east, featuring ten individuals or institutions notable for their impressive progress.

Starts at Tottenham Court Road tube station (Exit 2)
2pm; *FREE - but pre-booking is recommended*

CHILDREN'S BLOOMSBURY

A walking tour of Bloomsbury with Dr Matthew Ingelby, exploring the neighbourhood's connection with the history of childhood and with children's literature.

Starts at Russell Square fountain
2pm; *FREE - but pre-booking is recommended*

Music

NEW WAVE LUNCHTIME CONCERT: ORIX DUO

Pianist Kevin Suherman and cellist Ye Jin Choi perform works by Debussy, Dvorak and Gershwin, inspired by the 50th anniversary of Neil Armstrong's lunar landing.

The Music Room
1.10pm; *FREE - but pre-booking is recommended*

THE HARRISON ALL DAY FOLK FESTIVAL

For their 16th all day Folk Festival, the Harrison will be assembling a group of contemporary musicians that are far from ordinary, bringing together a programme that is brimming with energy, lyricism and musicianship.

The Harrison Pub
Food 12 noon; music 2pm - midnight
FREE - Just Turn Up

THE VOICES OF A NEW GENERATION

Soprano Milly Forrest and baritone Theodore Platt are joined by pianists George Ireland and Keval Shah to present a programme of rare Russian composers.

Pushkin House
3pm; Tickets: £20 (£16)

Performance & Film

OBLIVION INDUSTRY (See page 35)

The Horse Hospital
10am - 6pm (and 19 Oct)
FREE - just turn up

NEW WAVE THEATRE: JOAN'S DECISION

Inspired by Joan of Arc's personal plight, actor and performer Gintare Smigelskyte channels the historical icon's unconditional bravery, in this intimate, charged and highly physical piece

Bloomsbury Theatre Studio
11.30am; Tickets: £5

NEW WAVE THEATRE: ORPHÉE - THE UNDERTOW COLLECTIVE

This newly devised physical theatre production is inspired by Jean Cocteau's 1950 film, and reimagines and extends the myth of Orpheus and Eurydice to explorations of other mythologies of death, immortality, bereavement and the afterlife.

Bloomsbury Theatre Studio
1.30pm; Tickets: £5

A MOON WITH A VIEW: MAPS

A dance that explores the potential of a world without borders. *MAPS* reflects on the changing nature of a map and how globalisation and freedom of information have broken our understanding of borders, producing a new cartography of the world.

Wellcome Collection
3pm; *FREE - Just Turn Up*

NEW WAVE THEATRE: BITS AND BOBS

Where does friendship end when death begins? How do our memories entangle our daily lives? A hard-hitting play about a humorous friendship dealing with the aftermath of suicide.

Created by RADA graduates Addie Uglow and Cody Freischlag.
Bloomsbury Theatre Studio
4pm; Tickets: £5

NEW WAVE THEATRE: I'M FINE / WE'RE FINE - VISCOUS

The Shepard family is the last on a street of empty houses. Their little, dusty home carries on with ritualized routine, a fragile longing for togetherness. Set in the American Rust Belt, a play about coming home, staying home, leaving home, and the ties that bind a family together.

Bloomsbury Theatre Studio
6.30pm; Tickets: £5

Hello Moon!

1969 Tea Dance



Hello Moon! 1969 Tea Dance

Finale of Bloomsbury Festival 2019
- party like it's 1969!

Travel back through space and time to 1969 and join us for an afternoon of 60s and 70s glamour and dance, with Ragroof Tea Dance, in the sumptuous ballroom of the Kimpton Fitzroy London.

Enjoy iconic music from the era (including Sugar Sugar, The Beatles, Elvis, Marvin Gaye and The Rolling Stones), 60s & 70s fashion, fun dance displays and the opportunity to strut your stuff in instant dance classes, alongside tea and cake and a tippie of gin. You'll be sure to have a whirl of a time!

All welcome - no dance partners needed. Suitable for all ages and abilities. Bars open serving drinks tea, cakes and more. Come dressed to impress a la 1969 - we will!

Produced by Dorothy's Shoes and Bloomsbury Festival, supported by Kimpton Fitzroy London.

**Ballroom, Kimpton Fitzroy London
3pm**

Tickets: £12 (£10) includes an afternoon tippie of gin for the grown ups!





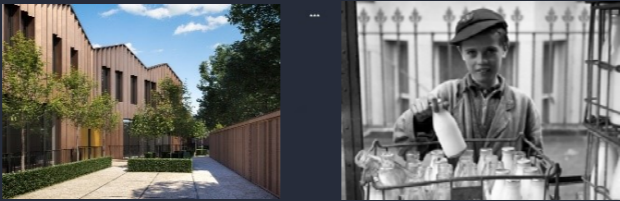
IMPERIAL LONDON
HOTELS

Rooms from £55.00 per night
including breakfast in Bloomsbury

www.imperialhotels.co.uk



THE
OLD DAIRY
BLOOMSBURY



A private collection of two and three bedroom apartments & three bedroom townhouses in the heart of Bloomsbury.

sales@gsdlondon.co.uk www.goldenstone.co.uk T: 020 31953466

A development by
GOLDENSTONE

Boodle
Hatfield.

Creativity takes courage.
- Henri Matisse

Whether you are an entrepreneur, artist, family business, property owner or landed estate, our lawyers draw from 300 years of effective and innovative advice.

London Mayfair Oxford London Bankside
www.boodlehatfield.com | @boodlehatfield
+44(0)20 7629 7411

BE WELCOMED

Whether you are staying for leisure or business, St Giles London hotel is your home away from home in the heart of Bloomsbury, London.



ST GILES LONDON
A St Giles Hotel

www.StGilesHotels.com | Save 10% Promo Code: **RD5AVE**

Schroder Real Estate
is proud to support the Bloomsbury Festival

Schroders



HURFORD SALVI CARR
ARE PROUD TO
SPONSOR THE 2019
BLOOMSBURY FESTIVAL

HURFORD SALVI CARR
BLOOMSBURY'S ESTATE AGENT

BLOOMSBURY FESTIVAL

FESTIVAL PATRONS

Her Grace The Duchess of Bedford
Professor Michael Arthur, President and Provost of UCL
The Rt Hon Keir Starmer QC MP

FESTIVAL TRUSTEES

Professor Maurice Birotti (Chair)	Gill Henderson
Michael Buffham-Wade	Nicole Logan
Tim Coker	Nick Potter
Michael Dixon	John Robinson
Joe Hancock	Abigail Tan-Giroud

FESTIVAL TEAM

Festival Director	Kate Anderson
Artistic Associates	Orit Azaz & Bill Gee
Senior Programme Manager	John-Paul Muir
Programme Manager	Celine McKillion
Operations Manager	Melanie Wilson
Associate Production Manager	Jonathan Bartlett
Marketing Manager	Claire Bowdler
Press and PR Representative	Michael Eppy
Designer	Gillian Allmark
Fundraising & Admin Officer	Rochelle Reid
Bookkeeper	Penelope Eaton

BLOOMSBURY FESTIVAL PRODUCTIONS

Creative and production teams include:

Hazel East	Jessica Hudsley
Laura Halliwell	Lia Prentaki.

MAJOR SPONSORS



FESTIVAL SPONSORS



BUSINESS SUPPORTERS

Mishcon de Reya
RSA
Gerald Eve
Bloomsbury Institute

Knight Frank
Premium Support Services Ltd
Farebrother
Ecole Jeannine Manuel UK

Tuffin Ferraby Taylor
Nourish London
Forest and Ray
New London Architecture

PRINCIPAL SPONSORS



FUNDERS



MAJOR PARTNERS



THROUGHOUT THE FESTIVAL (pages 8-11)

Museum of the Moon	13 - 19 Oct
Sir Hubert Von Herkomer Photography	11 - 19 Oct
Louis Bennett - Art Prize 2019	11 - 19 Oct
26 Leaps	11 - 20 Oct
A Mural for Cromer Street	13 - 20 Oct
Imagining Mountains/Small Steps...	17 - 20 Oct
Writers from 26 in Residence	11 - 20 Oct
In Paradise - Margarita Gluzberg	12 - 19 Oct
On Earth in Camden	11 - 18 Oct
Victorian Blogging...	11 - 20 Oct
A Moon with a View - Being Human	11 - 20 Oct
They Walked in Moonlight	11 - 20 Oct
Ten Thousand Difficulties...	12 - 19 Oct
Tales from the Crust - Ignacio Acosta	11 - 19 Oct
Craft & Graft: Making Science Happen	11 - 19 Oct
Life and More	16 - 20 Oct
Ancient Light	17 - 19 Oct

FRIDAY 11 OCTOBER**SPECIAL EVENT (page 12/13)**

Moonlight on Store Street	6pm - 9.30pm
---------------------------	--------------

SATURDAY 12 OCTOBER**FAMILY (page 15)**

Family Art Day at October Gallery	10am - 11.30am
Over The Moon - UCL Museum Trail	1pm - 5pm

WALKS, TALKS & TOURS (page 15)

Shaping Bloomsbury	11am
Philosophical Ideas that Changed the World	12pm

The Drooping Buds of Bloomsbury	1.30pm
26 Leaps in Conversation	2pm
LITERATURE (page 15)	
Scrawl: A Writing Workshop	11.30am
Jay Merrill and Friends	4.30pm
Big Book Out: Cursed Britain	6pm
MUSIC (page 17)	
Lunchtime Concert: Guangmei Chen	1.10pm
Music In Space - Goodensemble	7.30pm
EHXHIBITIONS (page 17)	
Astronomical Light: Bring Your Own Beamer	6pm
PERFORMANCE & FILM (page 17)	
Indigenous Electronic Arts & Forest Guardians...	2pm
The Glass Elephant	3.30pm
AIDS: A Priest's Testament	5pm
13th Native Spirit Film Festival Opening	6.30pm
Bright Club: Failure	7pm

SUNDAY 13 OCTOBER**SPECIAL EVENTS (page 18/19&20)**

Cromer Street Welcomes the Moon	4pm - 7pm
Print the Moon - Lumen	7.30pm

WALKS, TALKS & TOURS (page 21)

Small Steps Towards Freedom...	11am
Small Steps Around St Giles	11am
William Morris and his Bloomsbury Circle	3pm
Bloomsbury Moonwalk	8pm

MUSIC (page 21)

Lunchtime Concert: Xiaowen Shang	1.10pm
----------------------------------	--------

WORKSHOPS (page 21)

Music Workshop with Baluji Shrivastav OBE	2pm
PERFORMANCE & FILM (page 21)	
Native Spirit Decolonial Love...	2pm
Bodies in Space	2pm
Apollo 11	4pm
Blue	7pm

TUESDAY 15 OCTOBER**SPECIAL EVENTS (page 22)**

Mirroring the Moon	7pm
Small Steps, Huge Impact...	5.30pm - 7.30pm

PERFORMANCE & FILM (page 23)

While You Are Here	7.30pm
--------------------	--------

LITERATURE (page 23)

Paris Among the Artists	6pm
-------------------------	-----

MUSIC (page 23)

Lunchtime Concert: Tara Viscardi	1.10pm
----------------------------------	--------

WEDNESDAY 16 OCTOBER**WALKS, TALKS & TOURS (page 24)**

A Veritable Celebration of Burton's Endeavour...	1pm
Tour of the Wiener Library and Archives	1pm
Einstein on the Run...	5.30pm

MUSIC (page 25)

Lunchtime Concert: Puppets...	1.10pm
Lunchtime Concert: Earth Under the Moon	1.10pm

LITERATURE (page 25)

Big Book Out: Moonwalking Book Launch	6.30pm
---------------------------------------	--------

PERFORMANCE & FILM (page 25)

The Water is Wide - Ingenious Purpose	1pm
SPIN - Adventures in Spoken Word	4.30pm
Film Screening: Stalker (1979)	6.30pm
While You Are Here	7.30pm
Geometer - Rerooted Dance Collective	8pm

THURSDAY 17 OCTOBER**WALKS, TALKS & TOURS (page 27)**

Tour of the Wiener Library and Archives	1pm
Following in the Footsteps of Frances Taylor	5.30pm
Big Book Out: Shopfronts of London	6.30pm
What the Nation Would Not Do...	7pm
A Moon with a View: Panel Discussion	7pm

PERFORMANCE & FILM (page 27)

Bring Them Home	7pm
-----------------	-----

MUSIC (page 27)

Lunchtime Concert: Music for Youth	1pm
Magical Ragas and Poetry for the Moon	8pm

LITERATURE (page 27)

Moon Poems from the Darker Side	7pm
---------------------------------	-----

FRIDAY 18 OCTOBER**WALKS, TALKS & TOURS (page 29)**

Tour of the Wiener Library and Archives	1pm
Witches and the Moon	1pm
Moon - Art, Science, Culture	6.30pm

MUSIC (page 29)

Revolutionary Leaps	7.30pm
---------------------	--------

PARTICIPATE (page 29)

A Moon with a View: Active Maps	3pm
PERFORMANCE & FILM (page 29)	
The Hamletmachine	12-2pm & 4-6pm
Lunar Dreams	7.30pm
Unightly Drag	7.30pm
I Am Echoborg	8pm

SATURDAY 19 OCTOBER**SPECIAL EVENT (pages 30/31)**

Under The Moon - Festival Hub	11.30am-5pm
-------------------------------	-------------

FAMILY (page 33)

Creating Space - Architectural Workshop	2-4pm
A Moon with a View: Saturday Studio	2-5.30pm

PARTICIPATE (page 33)

Testing Situations - Created Out of Mind	10am-4pm
Tourist/Explorer	11am-5pm

WALKS, TALKS & TOURS (page 33)

Meet A Scientist	1-3.30pm
Great Strides in Medicine	2pm
Small Steps Around St Giles	2pm
Night Walking with Dickens	6.30pm

LITERATURE (page 35)

Bloomsbury and the Poets	12pm
Big Book Out: Dark Skies - Tiffany Francis	6pm

MUSIC (page 35)

Lunchtime Concert: Zhu Sun	1.10pm
Songhaven: Dementia-Friendly Concert	3pm
Camden Voices	7.30pm

PERFORMANCE & FILM (page 35)

Oblivion Industry	10am-6pm
Declan - Alistair Hall	12.30pm
Move Over Moon	2pm
Yellow Cake - Why Theatre Company	2.30pm
Three's a Crowd - Be-wilder Theatre	5pm
Cabaret Peculiar	6pm
Science Showoff	7.30pm
Cabaret to the Moon	8pm

SUNDAY 20 OCTOBER**SPECIAL EVENTS (pages 36/37 and 40/41)**

Small Steps...Giant Leaps - Festival Hub	11am-8pm
Hello Moon! 1969 Tea Dance - Festival Finale	3pm

FAMILY (page 38)

Under the Moon with Kate Wakeling	1pm
-----------------------------------	-----

WALKS, TALKS & TOURS (page 38)

Children's Bloomsbury	2pm
Modest Beginnings, Proud Achievements...	2pm

MUSIC (page 39)

Lunchtime Concert: Orix Duo	1.10pm
The Harrison All Day Folk Festival	2pm-midnight
The Voices of a New Generation	3pm

PERFORMANCE & FILM (page 39)

Oblivion Industry	10am-6pm
Joan's Decision	11.30am
Orphee - The Undertow Collective	1.30pm
A Moon with a View: MAPS	3pm
Bits and Bobs	4pm
I'm Fine/We're Fine - Viscous	6.30pm

Develop the skills and knowledge required by today's business employer with a degree from The University of Law Business School. Learn in small interactive workshops from commercially experienced tutors in our London Bloomsbury campus.

As part of our commitment to your successful future in business we offer you the chance to progress onto a business Master's degree **for free** once you've completed your undergraduate degree.

BUSINESS DEGREES FOR THE REAL WORLD

Visit our **website** to find out more about our courses

law.ac.uk/business



*See law.ac.uk for full terms and conditions of the Free Masters Offer

The
University of
Law

**BUSINESS
SCHOOL**

BLOOMSBURY
FESTIVAL 

BLOOMSBURY FESTIVAL: Senate House, Malet Street, London, WC1E 7HU
www.bloomsburyfestival.org.uk | info@bloomsburyfestival.org.uk

Registered charity No. 1149001 | Limited Company registered in England & Wales No. 07977987
VAT Registration No. 1374928 87